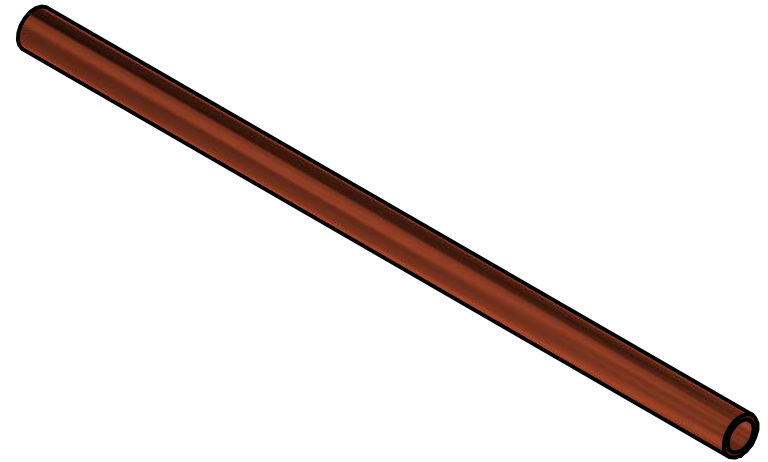
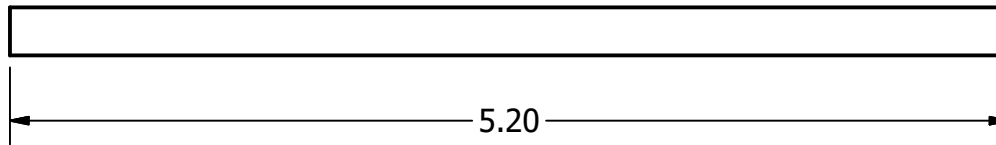
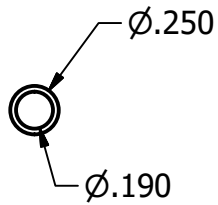


NOTE:
 COPPER MUST BE OFHC TEMPERED
 APPROPRIATELY TO BE HERMETICALLY
 SEALED WITH A PINCH-OFF COLD WELD.



DRAWN benstillwell		7/3/2018		THE UNIVERSITY OF CHICAGO			
RELEASED							
TOLERANCES (EXCEPT AS NOTED): X $\pm .2$.X $\pm .1$.XX $\pm .02$.XXX $\pm .005$				LAPPD TILE BASE ASSEMBLY TUBE			
SURFACE ROUGHNESS: Ra 64 μ IN							
UNITS INCH		SCALE 1 : 1		SIZE A	DWG NO CeramTBAssmCopperTube111617		REV
MATERIAL OFHC Copper				SHEET 1 OF 1			