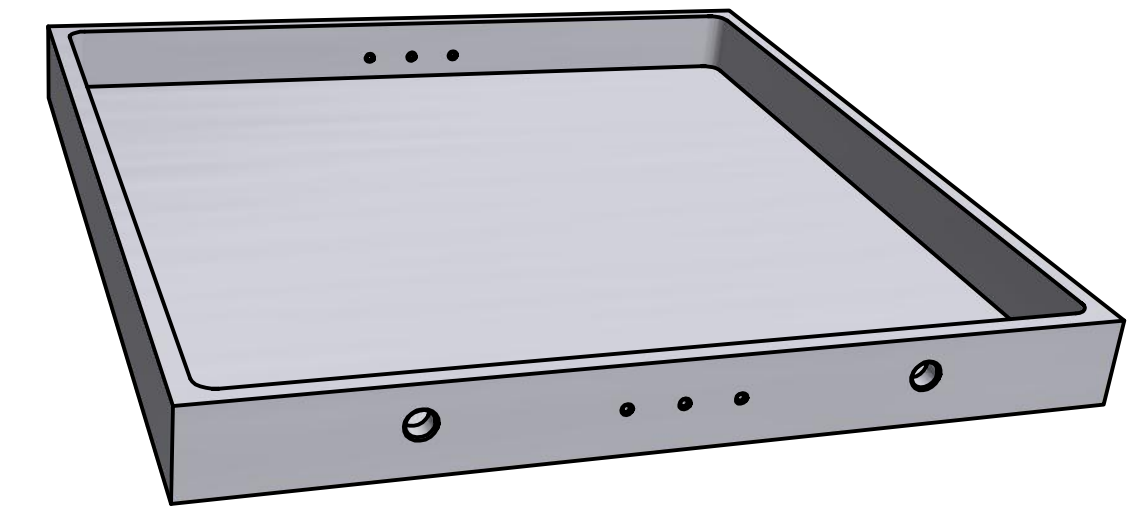


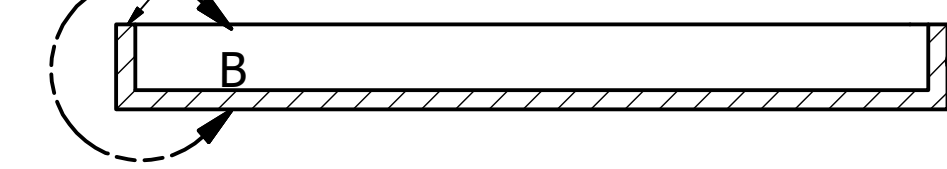
Rev.G Increased pin and tube hole diameters. Reduced pin hole chamfer and made both sides. Added chamfer to outside of tube hole.



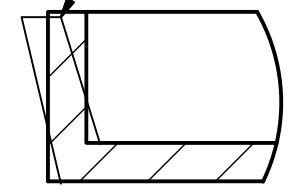
- Notes:
1. Tile base to be made of full-fired alumina 99.8% pure or higher.
 2. Tile base to be hermetic in helium leak-test at UC to 5×10^{-10} CC/SEC.
 3. To facilitate hermetic sealing of the pins during assembly air-firing at ~ 1600 C for 2-4 hrs. may eliminate micro-cracking due to grinding.
 4. A chamfer on the holes for the pins on the outside of the wall may also facilitate hermetic sealing and is at the discretion of the brazing house.
 5. Tol. $-.xxx \pm 0.010$
 $.xx \pm 0.020$
 Except as noted.
 6. Serial number shall consist of two letters indicating manufacturer name followed by a three digit number indicating manufacture count (eg FR001).

Mark UHV-compatible serial number. (See Note 6).

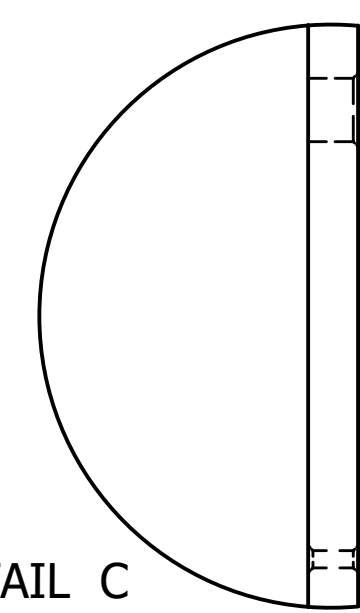
Top surface to be ground to Ra 20 μ m and flat to within .0005".
 Top surface to be parallel to top surface of base within $\pm .005$ ".



Wall tilt allowable if top surface is flat and parallel to base.



DETAIL B



DETAIL C

DRAWN rnorthrop	11/10/2015	University of Chicago		
CHECKED		TITLE		
QA		Green Trim		
MFG		Ceramic Tile Base - Vendor E		
APPROVED		SIZE B	DWG NO CeramTB062618revG	REV G
		SCALE	SHEET 1 OF 1	