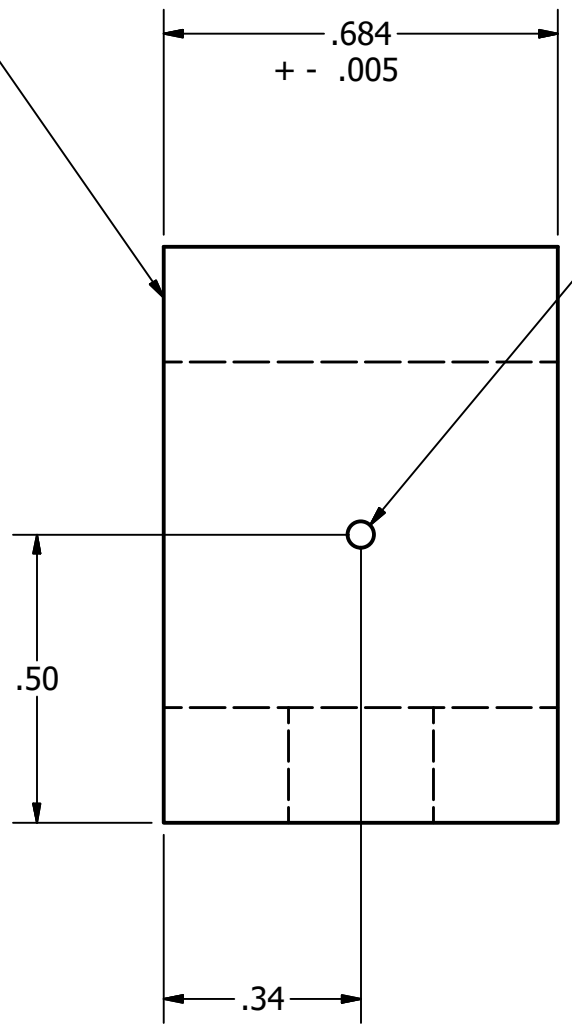
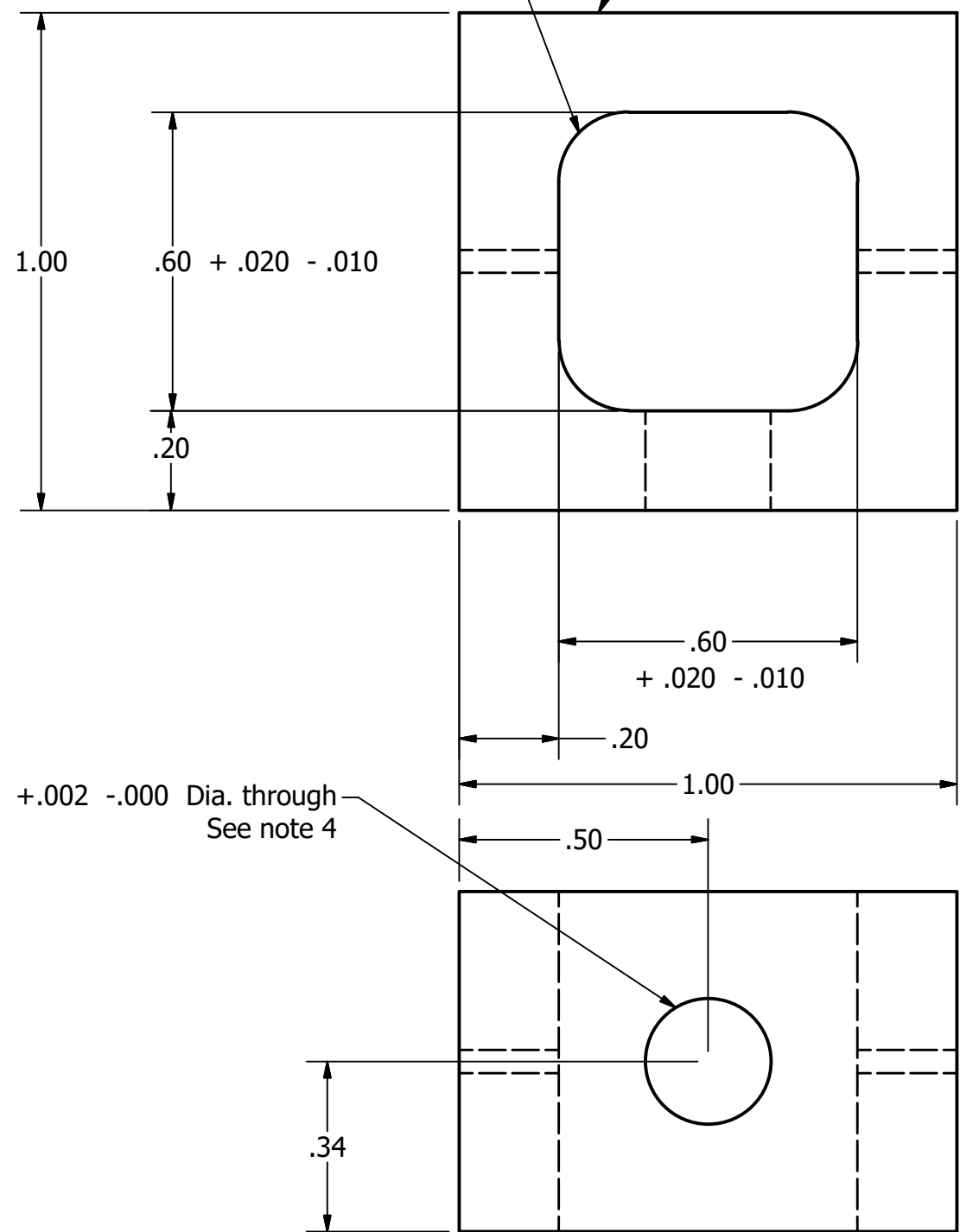


Rev. A Holes added, radius changed, and note changes 6.8.18 RN
 Rev. B Hole dims. charged at vendor request 6.12.18 RN

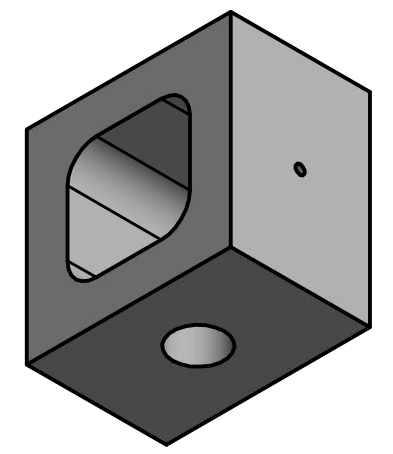
Top surface to be ground to Ra 20 micro inches and flat to within .0005".
 Top surface to be parallel to bottom surface to within + - .005".

.10 - .17 Rad.

Mark UHV-compatible serial number (see note 6)



.043 + .002 - .000 Dia. through
 2 places
 See note 4



Notes-

1. Tile base to be made of full-fired alumina 99.8% pure or higher or proposed purity with prior agreement by UC.
2. Tile base to be hermetic in helium leak-test at UC to $5 \times 10E - 10CC/SEC$.
3. To facilitate hermetic sealing of the pins during assembly air-firing at ~ 1600 C for 2-4 hrs. may eliminate micro-cracking due to grinding.
4. Details (dimensions, possible chamfer and/or step) of holes for pins and tubes to be worked out by ceramic vendor and brazing/metalization vendor.
5. Tol. -.xxx + - 0.010"
.xx + - 0.020"
6. Serial number shall consist of two letters indicating manufacturer name followed by a three digit number (eg FR001). (eg FR001). Serial number to be on the outer surface of a side without the tube or pin.

.2545 + .002 - .000 Dia. through
 See note 4

DRAWN rnorthrop	3/2/2018	University of Chicago		
CHECKED				
QA		TITLE		
MFG		1-inch Gen -II Ceramic Side Wall Vendor O		
APPROVED		SIZE B	DWG NO Ceram1in030318revB	REV B
		SCALE 3	SHEET 1 OF 1	