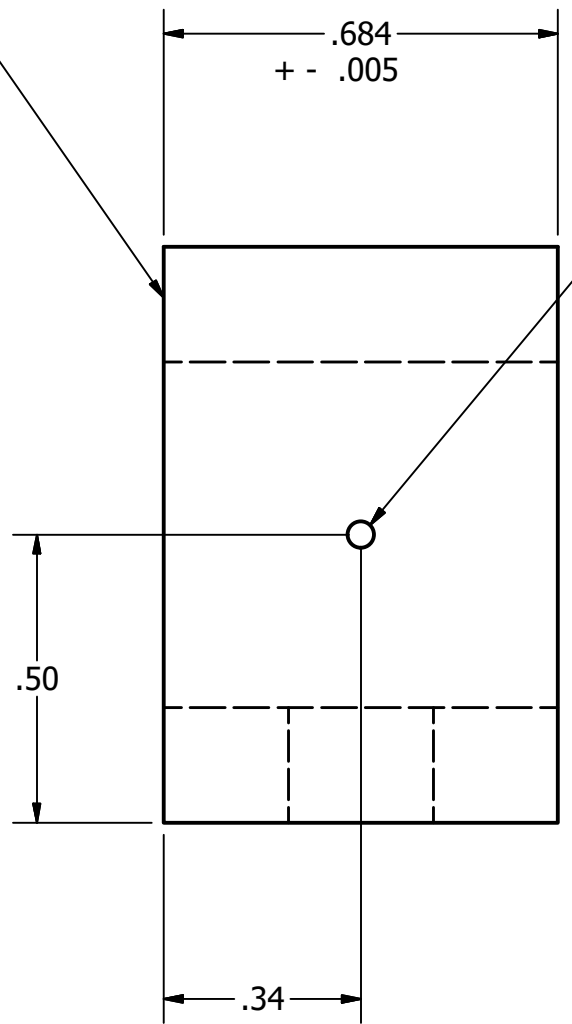
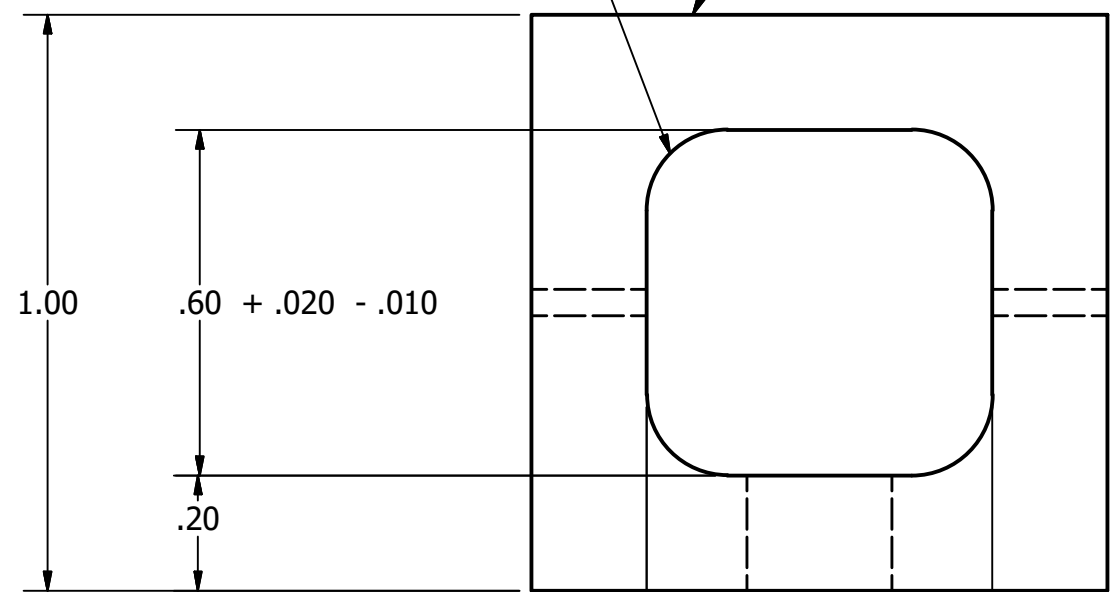


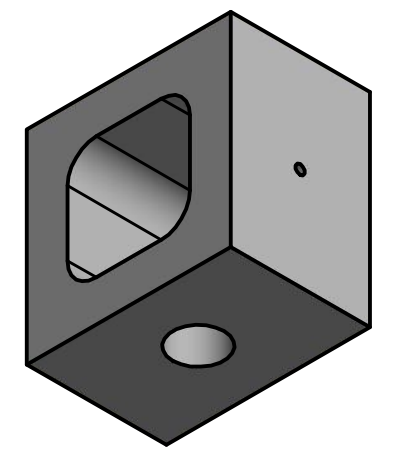
Top surface to be ground to Ra 20 micro inches and flat to within .0005".
 Top surface to be parallel to bottom surface to within + - .005".

.10 - .17 Rad.

Mark UHV-compatible serial number (see note 6)



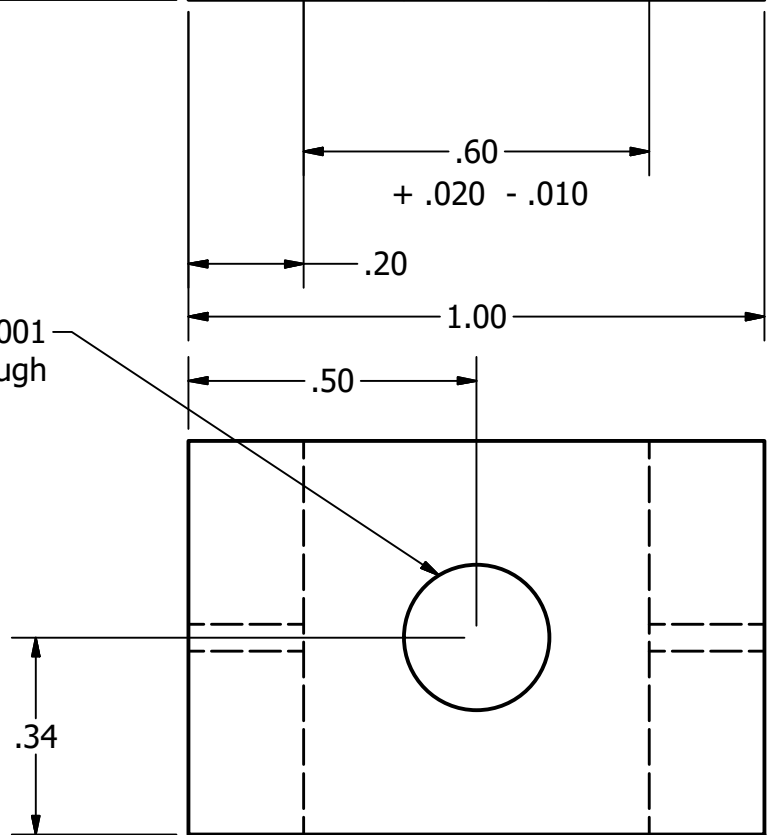
.046 +.000 -.003 Dia. through 2 places
 See note 4



Notes-

1. Tile base to be made of full-fired alumina 99.8% pure or higher or proposed purity with prior agreement by UC.
2. Tile base to be hermetic in helium leak-test at UC to $5 \times 10E - 10CC/SEC$.
3. To facilitate hermetic sealing of the pins during assembly air-firing at ~ 1600 C for 2-4 hrs. may eliminate micro-cracking due to grinding.
4. Details (dimensions, possible chamfer and/or step) of holes for pins and tubes to be worked out by ceramic vendor and brazing/metalization vendor.
5. Tol. -.xxx + - 0.010"
 .xx + - 0.020"
6. Serial number shall consist of two letters indicating manufacturer name followed by a three digit number (eg FR001). (eg FR001). Serial number to be on the outer surface of a side without the tube or pin.

.250 +.003 -.001
 Dia. through
 See note 4



DRAWN rnorthrop	3/2/2018	University of Chicago		
CHECKED				
QA		TITLE		
MFG		1-inch Gen -II Ceramic Side Wall		
APPROVED		SIZE B	DWG NO Ceram1in030318revA	REV A
		SCALE 3	SHEET 1 OF 1	