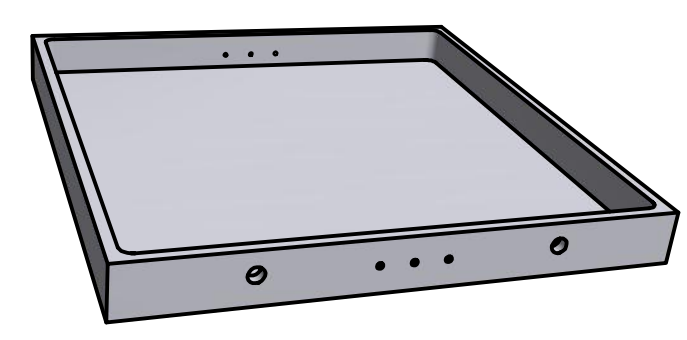
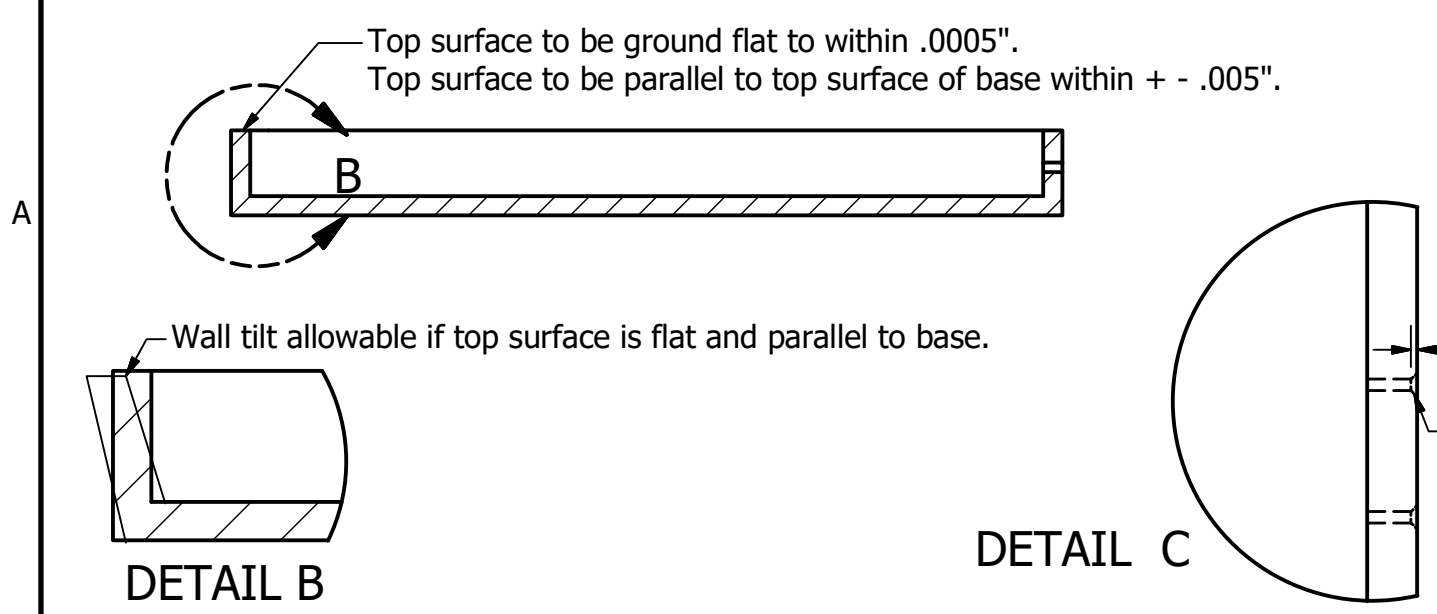


- Rev.A Pin hole dia. increased from .042 to .044 11.30.16 RN
- Rev.B Pin hole dia. changed to .043 - .046 , chamf. added, and notes 3 & 4 added 3.21.17 RN
- Rev.C Tol. note (note 5) added 3.23.17 RN
- Rev.D Top surface note changed to "Top surface to be flat. Surface finish to be < / = 20 micro-inches." 6.5.17 RN  
Revision D not used.
- Rev.E Reworded top surface flatness and parallelism note. Increased number pin holes to 6. Added serial marking. 11.16.17 BS  
Revision E follows directly from revision C.



- Notes:
1. Tile base to be made of full-fired alumina 96% pure or higher.
  2. Tile base to be hermetic in helium leak-test at UC to  $5 \times 10^{-10}$  CC/SEC.
  3. To facilitate hermetic sealing of the pins during assembly air-firing at ~1600 C for 2-4 hrs. may eliminate micro-cracking due to grinding.
  4. A chamfer on the holes for the pins on the outside of the wall may also facilitate hermetic sealing and is at the discretion of the brazing house.
  5. Tol.  $-.xxx + - 0.010"$   
 $.xx + - 0.020"$   
Except as noted.
  6. Serial number shall consist of two letters indicating manufacturer name followed by a three digit number indicating manufacture count (eg FR001).



DRAWN rnorthrop	11/10/2015	University of Chicago		
CHECKED		TITLE		
QA		Green Trim Ceramic Tile Base		
MFG				
APPROVED		SIZE B	DWG NO CeramTB111617revE	REV E
		SCALE	SHEET 1 OF 1	