

Swagelok fitting
316-L-4-HVCR-1A6

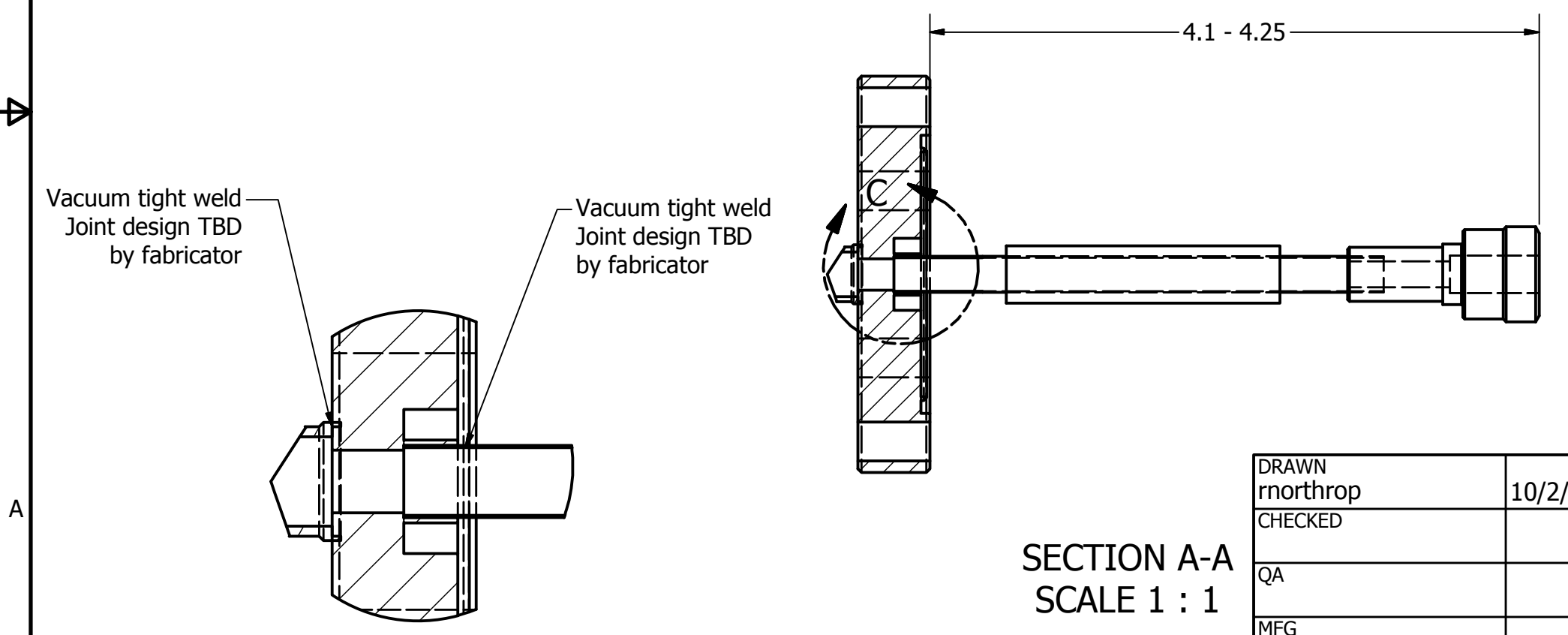
2.75 Conflat Flange
F0275X000N
note - seal side

Vacuum tight weld
Joint design TBD
by fabricator

Swagelok fitting
SS-4-UT-A-6

Center bore diameter
to be increased to .25

Bellows 1/4 CNVL tube
Swagelok 321-4-X-2



DETAIL C
SCALE 2 : 1

SECTION A-A
SCALE 1 : 1

Notes-

1. Welding must pass a helium leak-test to 5×10^{-10} Torr · L / Sec
2. Welding joint design TBD by fabricator.
3. All dimensions are inches.

DRAWN rnorthrop	10/2/2017	University of Chicago		
CHECKED				
QA		TITLE		
MFG		Vacuum Vessel Port Detail		
APPROVED		SIZE B	DWG NO VacPortTypeA100317	REV
		SCALE 1 : 1	SHEET 1 OF 1	