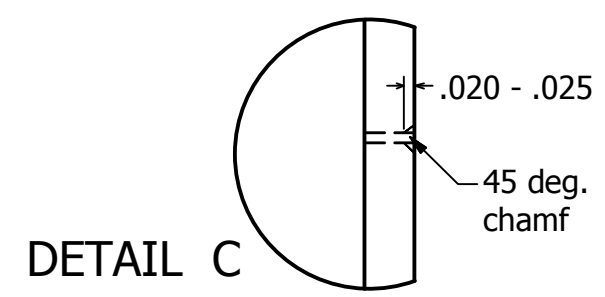
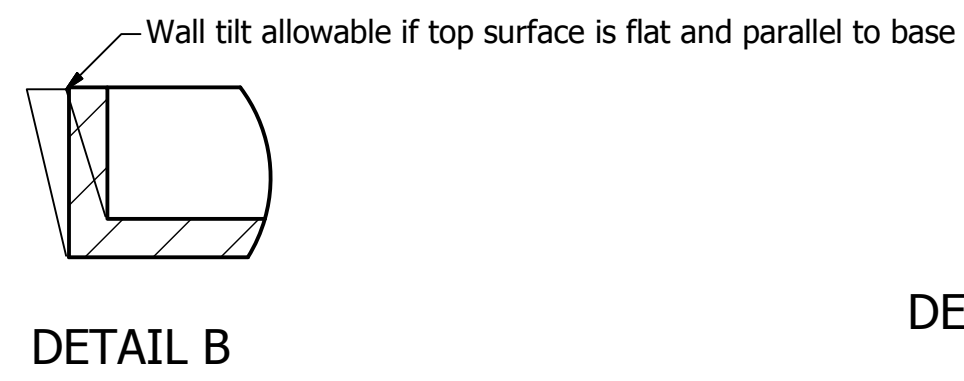
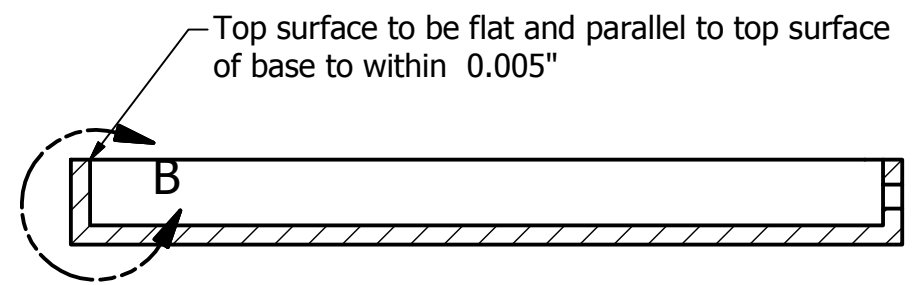


Rev.A Pin hole dia. increased from .042 to .044 11.30.16 RN  
 Rev.B Pin hole dia. changed to .043 - .046 , chamf. added, and notes 3 & 4 added 3.21.17 RN

Notes-

1. Tile base to be made of full-fired alumina 96% pure or higher.
2. Tile base to be hermetic in helium leak-test at UC to  $5 \times 10E - 10$ CC/SEC.
3. To facilitate hermetic sealing of the pins during assembly air-firing at  $\sim 1600$  C for 2-4 hrs. may eliminate micro-cracking due to grinding.
4. A chamfer on the holes for the pins on the outside of the wall may also facilitate hermetic sealing and is at the discretion of the the brazing house (see detail C).



DRAWN rnorthrop	11/10/2015	University of Chicago		
CHECKED		TITLE		
QA		Green Trim Ceramic Tile Base		
MFG				
APPROVED		SIZE B	DWG NO CeramTB111015revB	REV B
		SCALE	SHEET 1 OF 1	