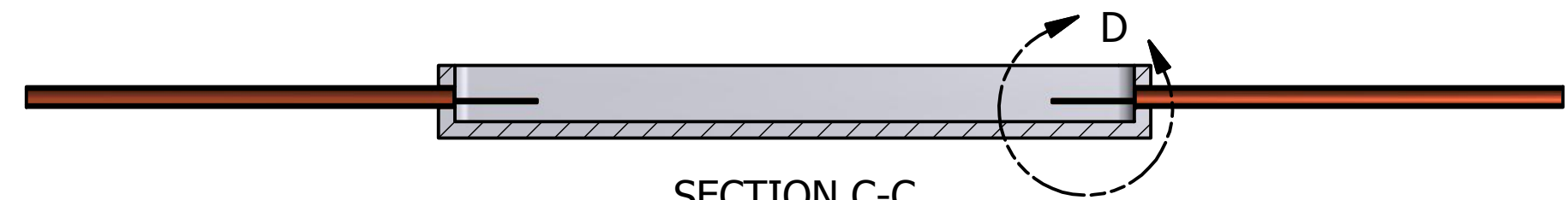
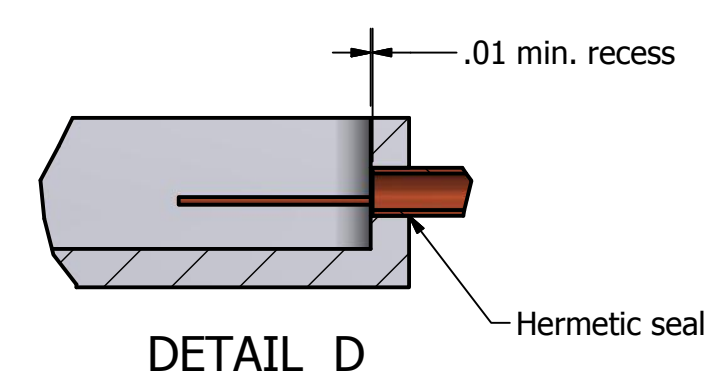


Notes-

1. Tile base assembly consists of the tile base, four OFHC copper tubes, and 6 through pins.
2. Tile base as specified in Univ. of Chicago print drawing # 6Pin4TubeTB011317.
3. The copper tube must be OFHC tempered appropriately to be hermetically sealed with a pinch-off cold weld.
4. The Base Assembly after brazing tubes and pins to be hermetic in helium leak-test at UC to $5 \times 10E - 10cc/sec$.



SECTION C-C



DETAIL D

DRAWN rnorthrop	1/11/2017	University of Chicago		
CHECKED		TITLE		
QA		6Pin 4Tube Assembly		
MFG		SIZE	DWG NO	REV
APPROVED		B	6Pin4TubeAssm011317	
		SCALE	SHEET 1 OF 1	